



# Clipstream

*Playerless video and audio streaming*

## **Clipstream™ Video 2.2 Technical Guide – Section 5 Plugin for Adobe Premiere**

**Disclaimer:** All content presented herein is subject to change without notice and is deemed as accurate as possible at time of publication. Please consult with Clipstream™ Video Support at <http://clipstream.com/help> for clarification if you encounter any erroneous or inconsistent material in this document.

© 2000, 2001, 2002 Destiny Media Technologies, Inc. All Rights Reserved. Clipstream, AudioClipstream, Clipstream Email, Bannerstream, Clipstream AudioMail and VideoClipstream are trademarks of Destiny Software Productions, Inc. All other trademarks are the property of their respective owners.

## Section 5 - Plugin for Adobe Premiere

<b>Installing the Premiere Plugin .....</b>	<b>5-2</b>
What You Need .....	5-2
Plugin Installation.....	5-2
<b>Using the Clipstream Video Plugin .....</b>	<b>5-2</b>
Plug-in Settings Configuration .....	5-2
Video Export Options.....	5-3
<b>Step-by-step .....</b>	<b>5-3</b>

## **Plugin for Adobe Premiere**

To stream with Clipstream Video, your source video must be converted into the Clipstream Video Format. One method of doing this is with the Clipstream Video Plugin for Adobe Premiere.

### **Installing the Premiere Plugin**

#### **What You Need**

1. VCSPremierePlugin.exe: Clipstream Video Plugin Installer File
2. Adobe Premiere 5.1\* or higher for the Windows platform, installed

#### **Plugin Installation**

1. Click on the download link for the Clipstream Video Plugin Installer File.
2. If prompted, select 'Save this program to disk'. Save the file VCSPremierePlugin.exe to a convenient location on your hard drive such as the Desktop or C:\Temp
3. Go to the download location on your hard drive and double-click on the file: VCSPremierePlugin.exe.
4. There will be a series of prompts to follow. Is Adobe Premiere 5 or higher installed? Select. Do you agree to the license agreement?
5. With positive answers to the previous questions, the files will now be installed. The installer will look for the Premiere plug-ins folder and suggest the location. It will also suggest a default location for the Clipstream Video folder. Click Browse to alter these locations.
6. Your installation is successful... Time to make some movies!

### **Using the Clipstream Video Plugin**

Once the settings files have been installed and/or created, it is very easy to create **Clipstream Video** files. All you need to do is the following:

1. Open a movie or movie project in *Premiere*
2. Under the "File" menu select Export>Movie
3. Click Load
4. Select one of the preset settings files or one that you have created
5. Click OK; Click OK again
6. Name the file with a .vcs extension and select where you would like to save the file
7. Click Save
8. Repeat the process for each bitrate you wish to encode

#### **Plug-in Settings Configuration**

It is advisable to print out the Preset Settings document for easy referral while encoding. The documents accompanying the installation program are found in the Clipstream Video folder. Default path: C:\Program Files\Clipstream\Video.

In the case that the preset settings are not preferable, the Clipstream Video Plug-in settings can be manually configured to adjust to the exact desired specifications.

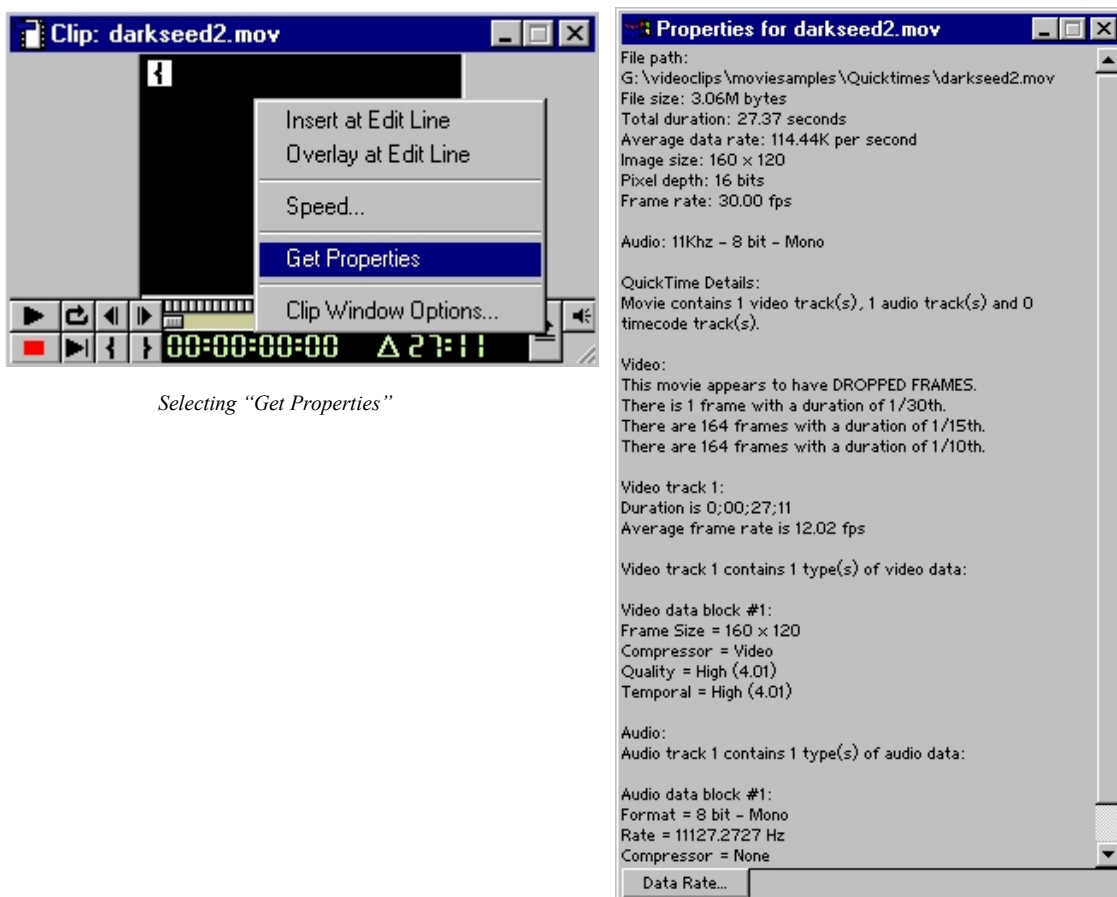
## Video Export Options

There are many factors to consider when selecting custom settings or deciding to load one of the pre-set Clipstream Video *Premiere* Plug-in settings. The ability to play a movie smoothly may need to be compromised to allow playback across a variety of connections. Uploading and testing may need to be performed more than once in order to arrive at an acceptable compromise for each speed.

### Step-by-step

1. Edit the video in Premiere and then right click on the movie and 'Get Properties'.

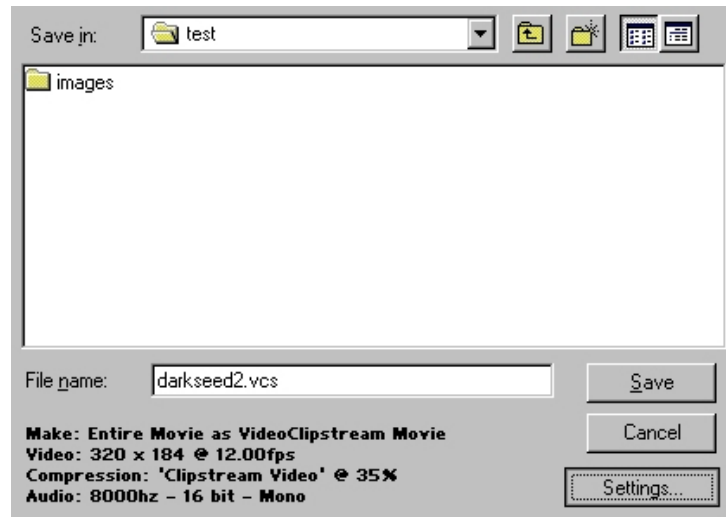
Take note of the Frame Rate, Image size, and Audio Compressor (in case of QDesign Music 2 in Quick Time or mpeg, audio may need to be down sampled manually).



Selecting "Get Properties"

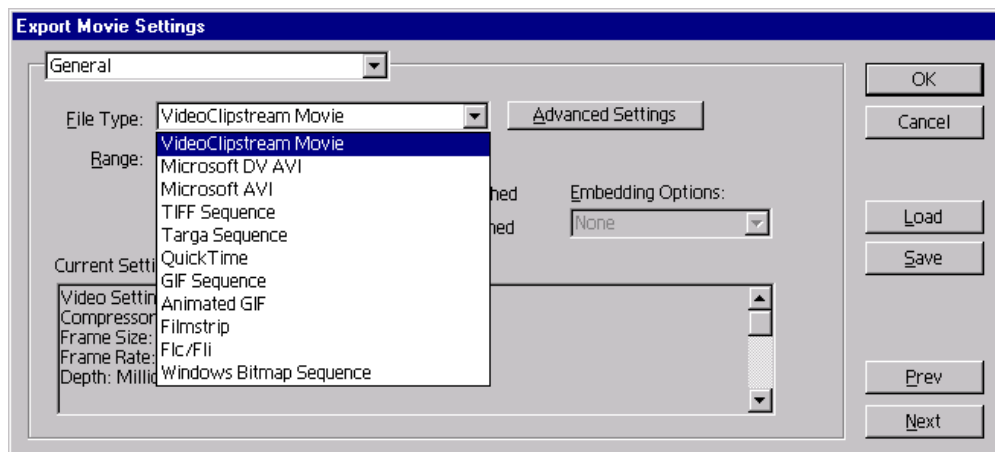
Properties Screen

- Once editing of the video has been completed in *Premiere*, go to **File>Export>Movie** and a dialogue box will appear.



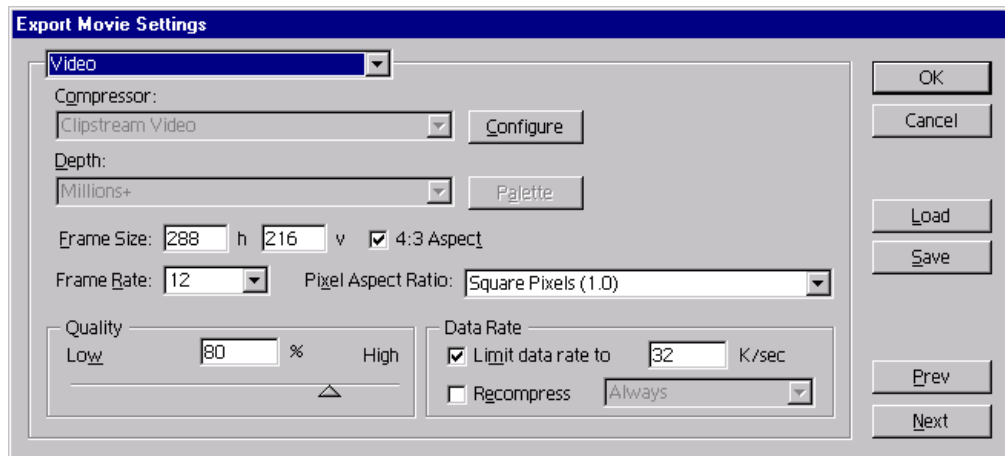
Export Dialog

- Click on the Settings tab.
- For File type, select Clipstream Video Movie from the pull down menu.



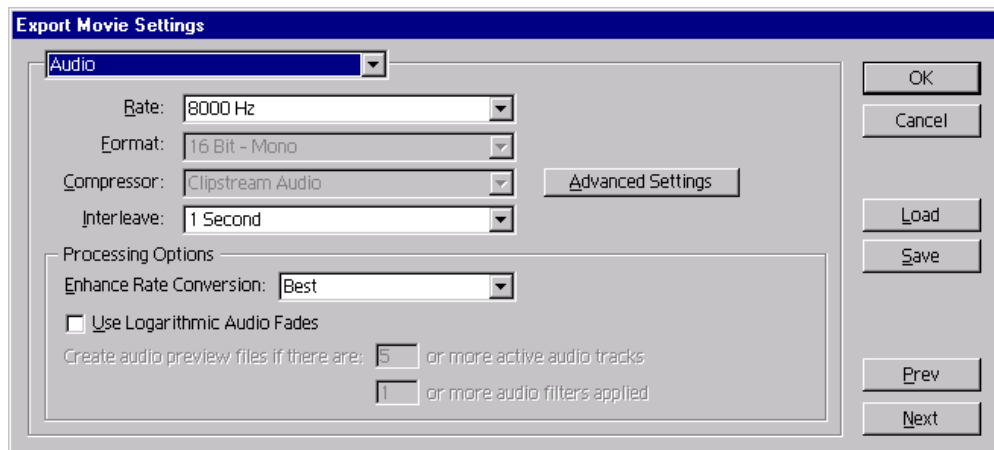
Selecting Clipstream Video Movie

- Uncheck 'Open when Finished' if it is selected.
- Take note of the Range; Choose 'Entire Clip' unless a specific portion of a project is desired.
- To choose a Clipstream Video Settings preset, click Load and select the appropriate setting. You can also save your custom settings here. Once selected, click OK, and then click OK again to exit the settings screen. Skip to step 12.
- If you do not want to use a preset, go to Video Settings in the top drop down menu.
- Make the appropriate changes to Frame Size, Frame Rate, Quality and Data Rate as outlined in the section **Video Settings**. Consult the on-line help pages for more.



Video Settings Screen

10. Select Audio Settings in the top drop down menu and make the appropriate changes as indicated in the section **Audio Settings**.



Audio Settings Screen

11. Changes to Keyframe Rendering and Special Processing do not need to be made.
12. Click OK to exit the Settings screen
13. In the Export Movie dialog, enter a name for your file with the .VCS extension and click save.
14. The following dialog should appear:
15. Click Generate Clipstream Video Applet Code to visit the clipstream.com code applet code generation website. Go to the section Clipstream Video Applet Code to learn how the Applet Code works.

